



Flt3-L Polyclonal Antibody

Catalog No	YP-Ab-15910
Isotype	IgG
Reactivity	Human;Rat;Mouse;
Applications	WB;IHC;IF;ELISA
Gene Name	FLT3LG
Protein Name	Fms-related tyrosine kinase 3 ligand
Immunogen	The antiserum was produced against synthesized peptide derived from human Flt3 ligand. AA range:171-220
Specificity	Flt3-L Polyclonal Antibody detects endogenous levels of Flt3-L protein.
Formulation	Liquid in PBS containing 50% glycerol, 0.5% BSA and 0.02% sodium azide.
Source	Polyclonal, Rabbit,IgG
Purification	The antibody was affinity-purified from rabbit antiserum by affinity-chromatography using epitope-specific immunogen.
Dilution	WB: 1/500 - 1/2000. IHC: 1/100 - 1/300. ELISA: 1/20000.. IF 1:50-200
Concentration	1 mg/ml
Purity	≥90%
Storage Stability	-20°C/1 year
Synonyms	FLT3LG; Fms-related tyrosine kinase 3 ligand; Flt3 ligand; Flt3L; SL cytokine
Observed Band	26kD
Cell Pathway	[Isoform 1]: Cell membrane; Single-pass type I membrane protein.; [Isoform 2]: Secreted.
Tissue Specificity	Brain,Spleen,
Function	function:Stimulates the proliferation of early hematopoietic cells. Synergizes well with a number of other colony stimulating factors and interleukins.,subunit:Homodimer (isoform 2).,
Background	Dendritic cells (DCs) provide the key link between innate and adaptive immunity by recognizing pathogens and priming pathogen-specific immune responses. FLT3LG controls the development of DCs and is particularly important for plasmacytoid DCs and CD8 (see MIM 186910)-positive classical DCs and their CD103 (ITGAE; MIM 604682)-positive tissue counterparts (summary by Sathaliyawala et al., 2010 [PubMed 20933441]).[supplied by OMIM, Jan 2011],
matters needing attention	Avoid repeated freezing and thawing!



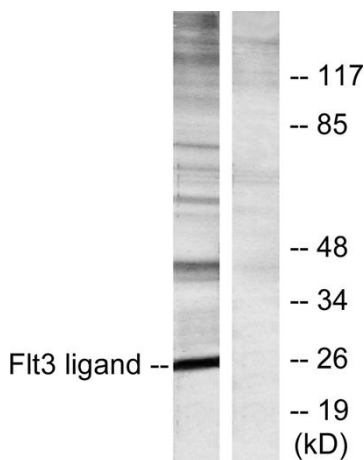
Usage suggestions

This product can be used in immunological reaction related experiments. For more information, please consult technical personnel.

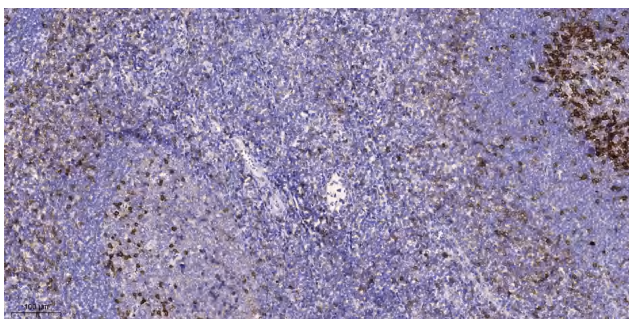
Products Images



Western Blot analysis of various cells using Flt3-L Polyclonal Antibody



Western blot analysis of lysates from Jurkat cells, using Flt3 ligand Antibody. The lane on the right is blocked with the synthesized peptide.



Immunohistochemical analysis of paraffin-embedded human tonsil. 1, Antibody was diluted at 1:200(4° overnight). 2, Tris-EDTA,pH9.0 was used for antigen retrieval. 3,Secondary antibody was diluted at 1:200(room temperature, 45min).